



Town of Lake Lure

Community Development Department

Request for Proposal – ABC Store Walkway

October 24, 2017

The Town of Lake Lure is building a walkway to better accommodate tourists, residents and the general public. The Town is requesting various proposals from contractors for construction of a walkway (486 ft. long, 6.5 ft. wide) from the Jack London Road to the parking lot of the Hickory Nut Gorge Outreach located at 2570 Memorial Highway, Lake Lure, NC. Contractors may bid on ALTERNATIVE 1, 2 and/or 3 for the walkway.

- Alternative 1 – Concrete: No color, poured (4 inches thick) with brushed finish.
- Alternative 2 – Concrete: Color, poured (4 inches thick) and stamped with typical finish associated with stamped concrete. Stamp pattern to match existing walkway, as close as possible. Custom made stamp not necessary.
- Alternative 3 – Pavers to match (color and material) of existing town walkways.

All contractors must show proof of workers compensation, liability insurance and E-Verify employees have all necessary authorization work in the US , if selected as lowest responsible bidder. A pre-proposal meeting to walk site and review plans with town staff is required. Call Public Works Director David Arrowood to schedule this meeting at 828-625-4696. He will go over the project with you. Also, there will be mandatory pre-construction meeting with the contractor selected.

Please submit this proposal questionnaire (completed) by Tuesday, November 14, 2017, 12 pm in a sealed envelope addressed to: Town of Lake Lure, Walkway Project, Shannon Baldwin, P.O. Box 255, Lake Lure, NC 28792. You may attach data sheets and visuals to supplement the information you provide on this form. However, additional information may not replace this form. Selection will be announced Wednesday, November 15, 2017 at 8 am. If questions, call Shannon Baldwin at 625-9983, ext. 107.

Please provide three references from previous clients, including names and contact information, who have used your services:

1. _____

2. _____

3. _____

Factors affecting town's selection (in addition to the answers you provide on this sheet) may include reference feedback. The Town reserves the right to accept or reject any proposal. Proposals shall remain firm for 60 days after being submitted to the Town. Late proposals will not be accepted.

Any costs incurred in the preparation of a response to this RFP are the responsibility of the contractor.

Alternative 1 – Concrete: No color, poured (4 inches thick) with brushed finish.

We, _____, propose \$ _____ as our
(name of company) (dollar amount)

total price for the ABC Store Walkway with the following specifications:

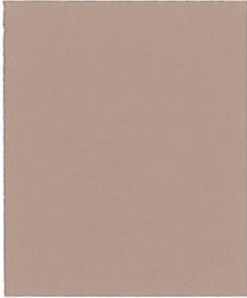
- Dimensions: 486 ft. long, 6.5 ft. wide and 4 inches thick.
- Material: Concrete – 3,500 psi with Fiber
- Concrete Color: None

Alternative 2 – Concrete: Color, poured (4 inches thick) and stamped with typical finish associated with stamped concrete. Stamp pattern to match existing walkway, as close as possible. Custom made stamp not necessary.

We, _____, propose \$ _____ as our
(name of company) (dollar amount)

total price for the ABC Store Walkway with the following specifications:

- Dimensions: 486 ft. long, 6.5 ft. wide and 4 inches thick.
- Material: Colored Concrete – 3,500 psi with Fiber - Pea Gravel Stamping Mix.
- Concrete Color: Davis Colors - *Sunset Rose (1 LB 160)*



SUNSET ROSE
1 LB 160

- Stamp: Standard stamp using pattern of existing walkway located at Jack London Road. Stamps to remain with the Town when job is complete.



Alternative 3 – Pavers: Match (color and material) of existing town walkway pavers.

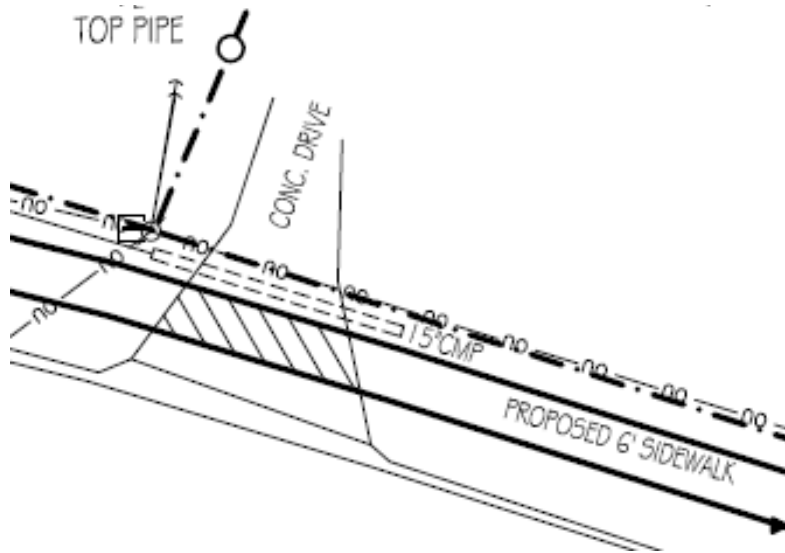
We, _____, propose \$_____ as our
(name of company) (dollar amount)

total price for the ABC Store Walkway with the following specifications:

- Dimensions: 486 ft. long, 6.5 ft. wide.
- Material: Concrete Pavers – Belgard Dublin Cobble 3-piece with Border.
- Color: Concrete Pavers – Belgard Dublin Cobble 3-piece with Border.

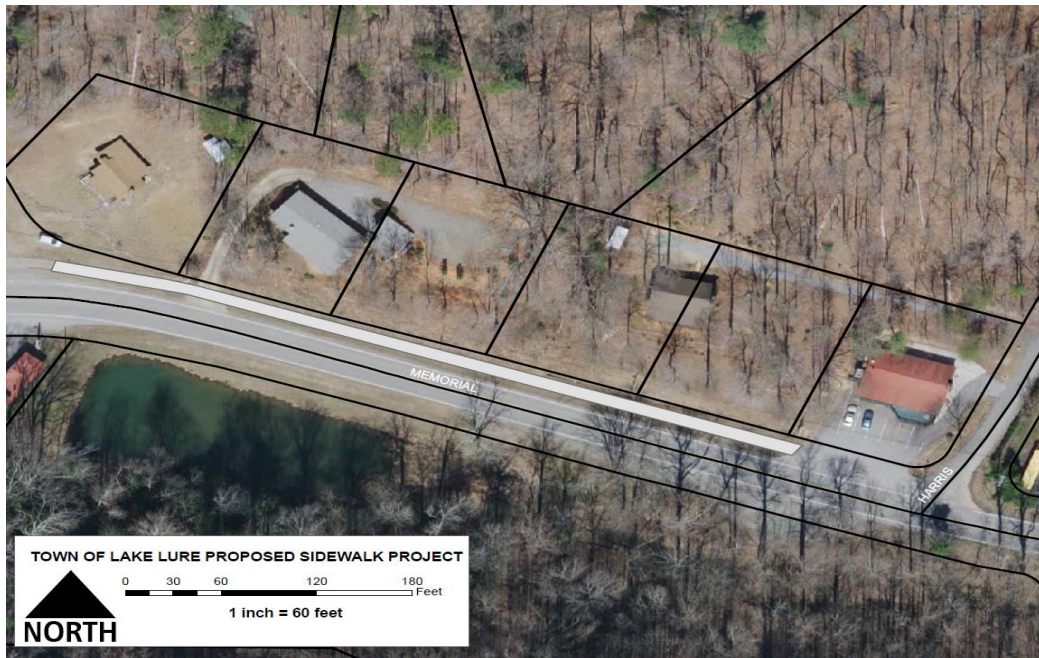
Additional Information

- Existing Driveway Treatment (see illustration below):
 - For Concrete: Cut existing concrete, remove concrete, form, then pour at grade of existing driveway.
 - For Pavers: Cut existing concrete, remove concrete, then add pavers to existing grade driveway.



- Highway and Walkway Separation Distance: The walkway needs to be parallel to and no closer than 5 to 7 ft. distance from edge of pavement of Memorial Highway. NCDOT prefers 7 feet where possible.
- Elevation: The high side (road side) of the walkway shall be at grade. The low side (ditch side) shall be filled and sidewalk shall have 2" fall into ditch. The final elevation of the sidewalk shall be lower than US64/74A to allow proper drainage from the roadway and shoulder into existing ditch. Existing ditch shall remain open to ensure smooth stormwater flow.
- Fill and Sand Base: Contractor shall fill low side of sidewalk as needed. Any fill needed shall be provided by the contractor. The base under the sidewalk shall be sand at least 1 inch deep.
- Cross Section Slope: Sidewalk will be sloped down 2 inches over 6.5 feet (width) toward existing drainage ditch to carry water away from Memorial Highway. Walkway will have neither curb nor gutter but rather constructed at grade.

Site Plan



East View (Looking East)



West View (Looking West)

